

# **HYPERTAC**

## interconnect

**CSC Connectors**  
**MIL-C-55302/138&139**



**RECEPTACLE & PLUG CONNECTOR :**

HYPERTAC  
interconnect

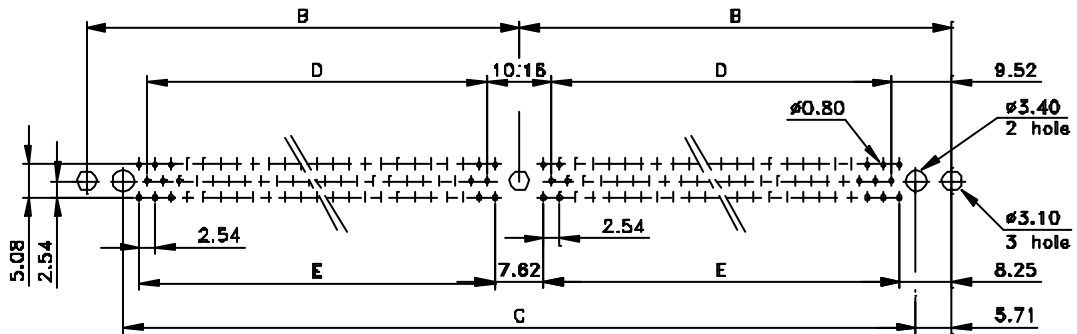
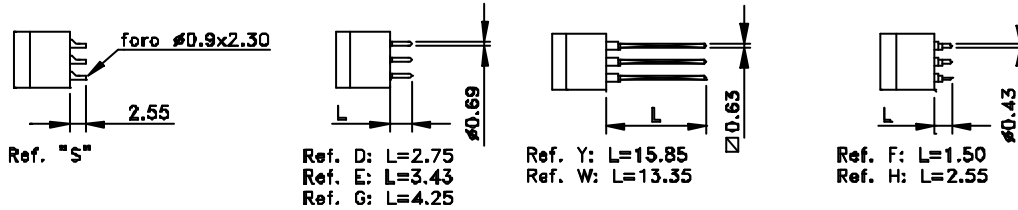
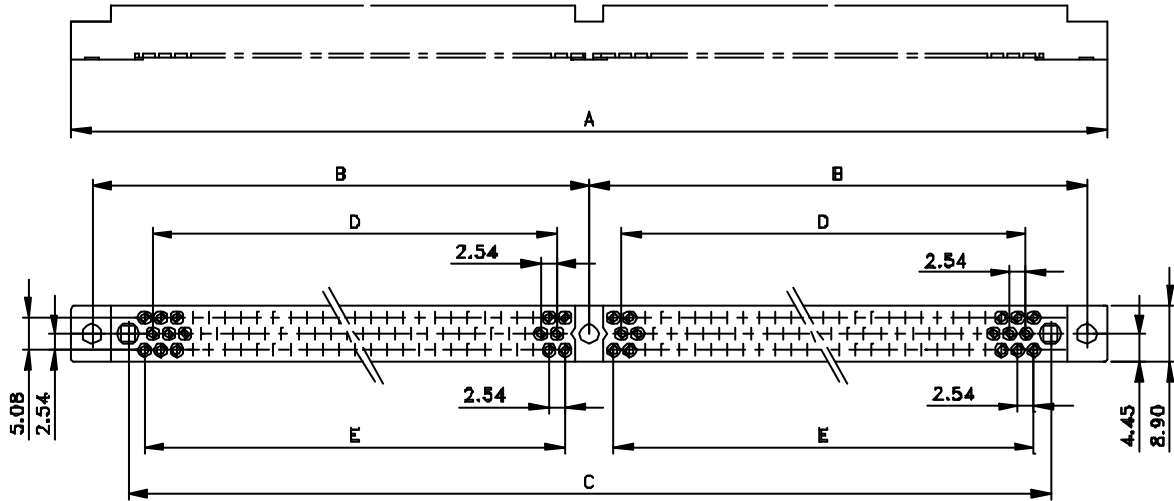
CSC  
M & F

160 - 80

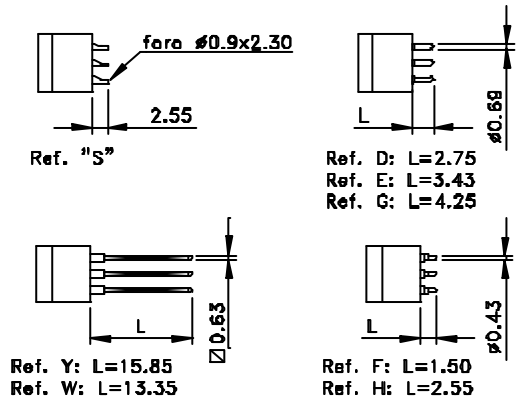
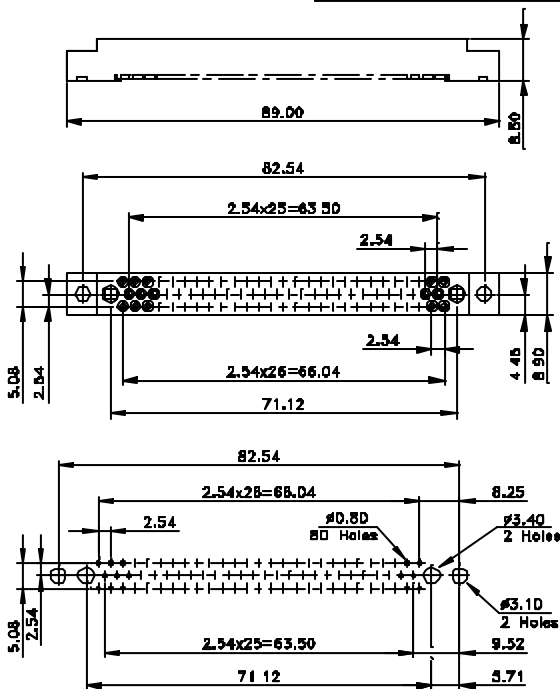
(Continued)

**GENERAL SPECIFICATION**

<b>Family identification</b>	CSC
<b>Contact diameter</b>	0,76 mm nominal
<b>Pitch</b>	2,54 mm Offset Grid
<b>Number of rows</b>	3
<b>Number of Contacts</b>	160 & 80
<b>Contacts Characteristics</b>	- Pins : Tourned Brass, Not Removable -Socket : Tourned Brass with CuBe Spring element, Not Removable
<b>Terminations Style Ref. PM</b>	-PCB Straight ref G ( Ask Factory for availability) -PCB Right angle ref. A - B - C - SMT (160 Ways Only ) see ref. dwg 18937 -Solder Cup ref. S ( wire size awg 22)
<b>Terminations Style Ref. EF</b>	-PCB Straight ref D - E - G -Wire Wrap Ref Y - W -Solder Cup ref. S ( wire size awg 22) -Flex Circuit Ref F - H ( Ask factory for availability)
<b>Compliant with</b>	- MIL-C-55302/138 & 139 ( 160 ways only)
<b>Guiding and Codying devices</b>	-D Shape, Full Round, Screw locking available
<b>Insulating material</b>	-Thermosetting per MIL-M-14 - or Thermoplastic per MIL-M-24519: ESA SCC 3401 Outgassing Requirements
<b>Contacts plating</b>	-According to MIL-C-55302 requirements ref H or Commercial level ref T -Pretinning available ref HS or TS
<b>Reference specification</b>	- MIL-C-55302/138 & 139 ( 160 ways only)
<b>Dielectric withstanding voltage (test voltage)</b>	>1000 V rms - Sea Level - >300 V rms at 33 torr
<b>Current carrying capacity (ask Factory for SMT)</b>	Signal : 5A ( $\Delta T= 30\text{ }^{\circ}\text{C}$ ) Individual
<b>Insulation resistance</b>	>10 <sup>6</sup> M $\Omega$ @ 500 V dc
<b>Separation force</b>	<110 g / cont.
<b>Contact life</b>	>10.000 cicles
<b>Vibration / Shock</b>	no microinterruptions greather than 2ns
<b>Operating range</b>	-55 $^{\circ}\text{C}$ + 125 $^{\circ}\text{C}$
<b>Accessories</b>	- Guide assembling tool ref 14613 - Antistatic pin protection ref 14827 - Bit ref Gardner Denver 507063 (awg 30), 509278(awg28),506445,(awg26) - Sleeve Gardner & Denver ref 507100



DIMENSIONS IN WIDTH					
Connector size	A (mm)	B (mm)	C (mm)	D (mm)	E (mm)
CSC160PM****	162.7	78.1	144.78	63.5	66.04



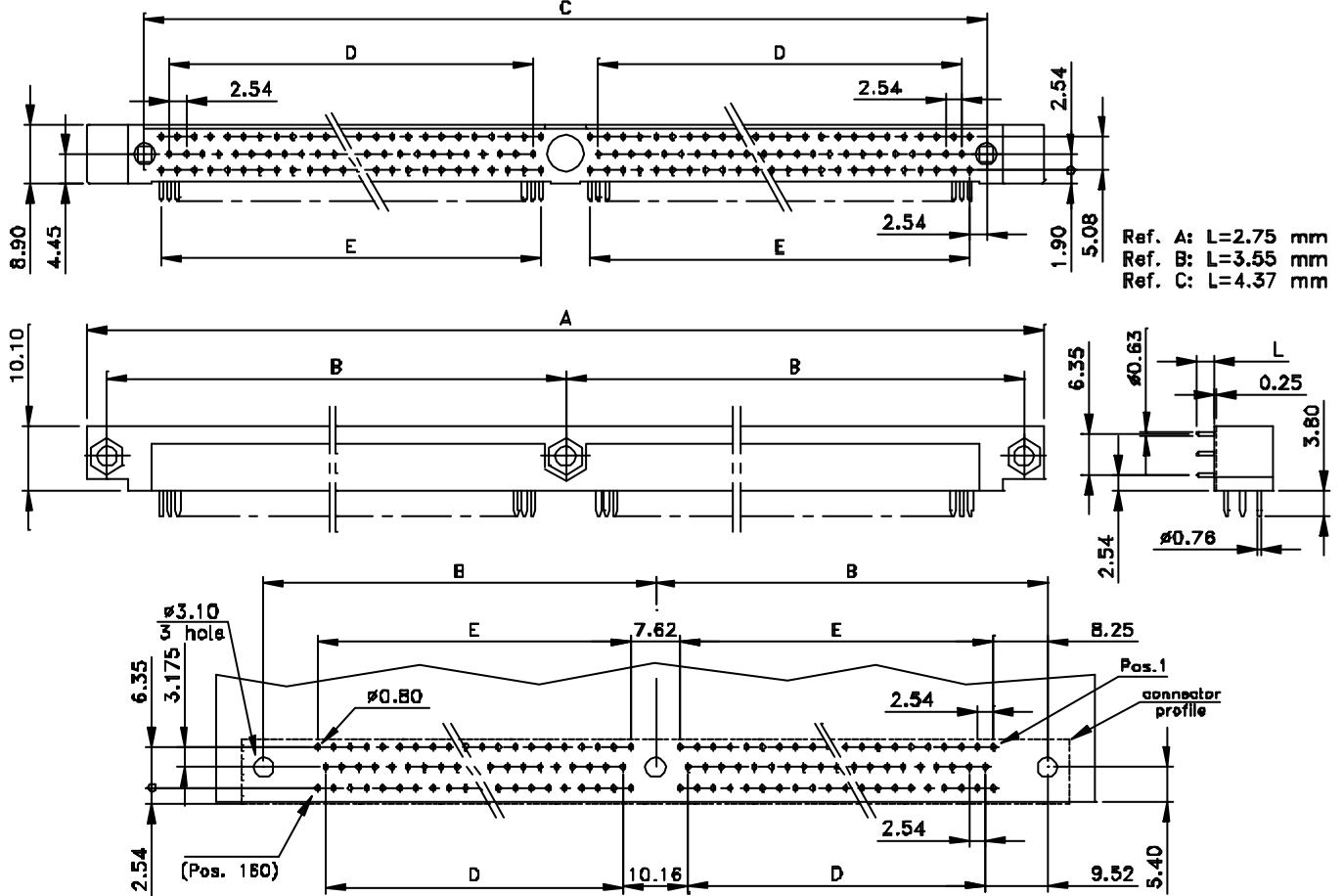
Notes  
1) Dimensions in mm

**PLUG CONNECTOR :**  
**160**  
**PIN CONTACT POSITIONS**

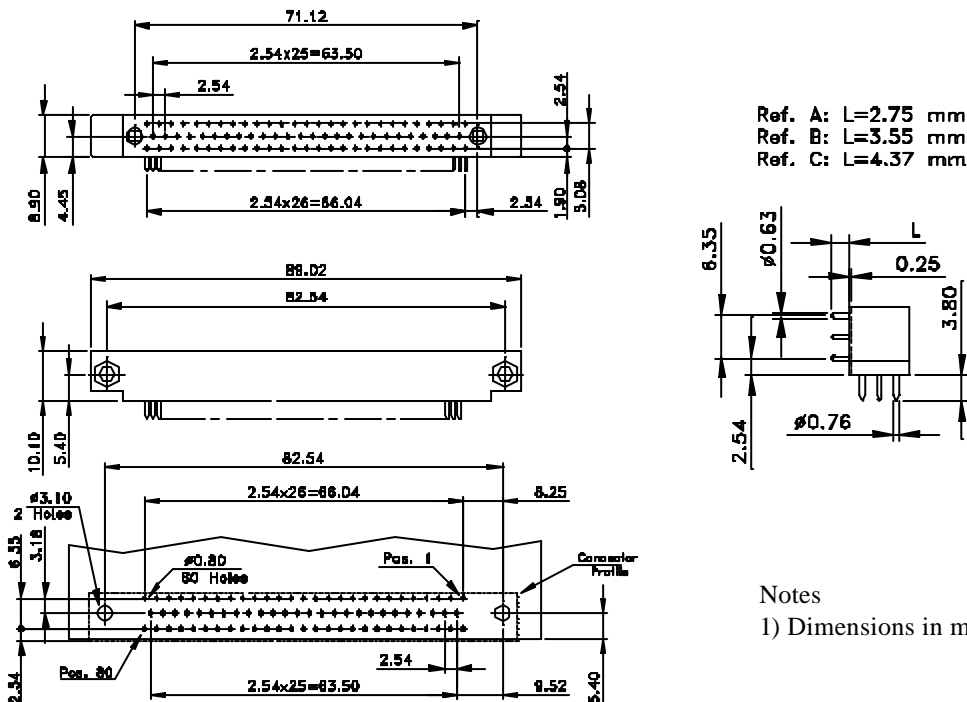
**HYPERTAC**  
interconnect

**CSC**

(Continued)



DIMENSIONS IN WIDTH					
Connector size	A (mm)	B (mm)	C (mm)	D (mm)	E (mm)
CSC160PM*****	162.68	78.1	144.78	63.5	66.04



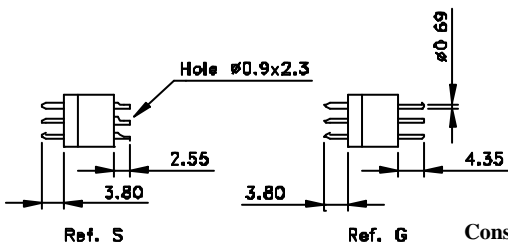
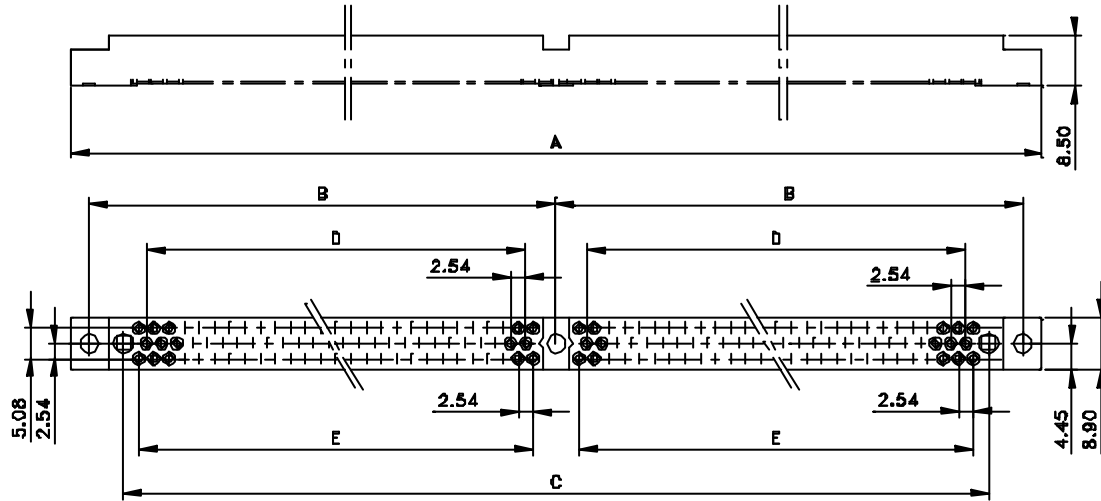
Notes  
 1) Dimensions in mm

HYPERTAC  
interconnect

CSC

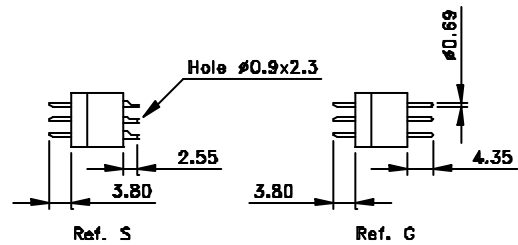
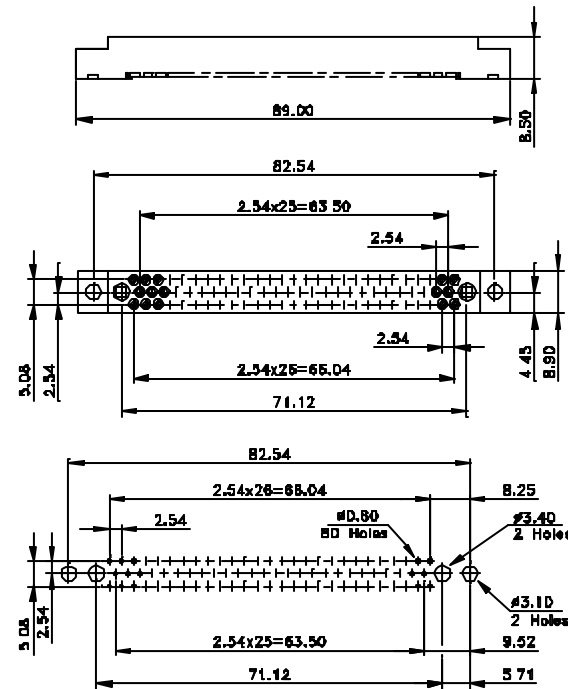
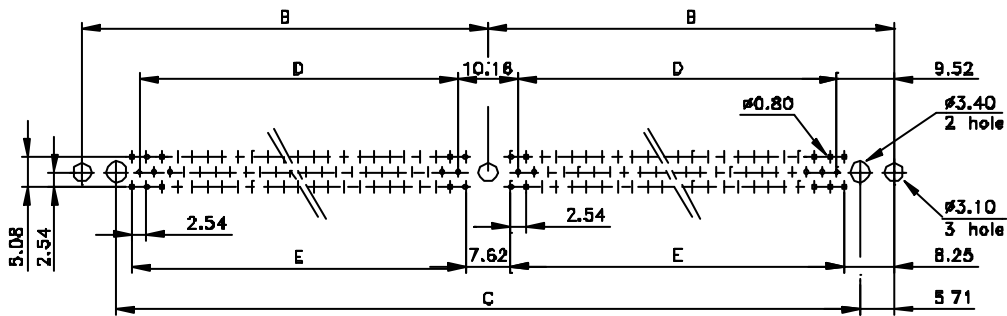
PLUG CONNECTOR :  
160 - 80  
PIN CONTACT POSITIONS

(Continued)



DIMENSIONS IN WIDTH					
Connector size	A (mm)	B (mm)	C (mm)	D (mm)	E (mm)
CSC160PM*****	162.7	78.1	144.78	63.5	66.04

Consult Factory for availability



Notes  
1) Dimensions in mm

ORDERING REFERENCES

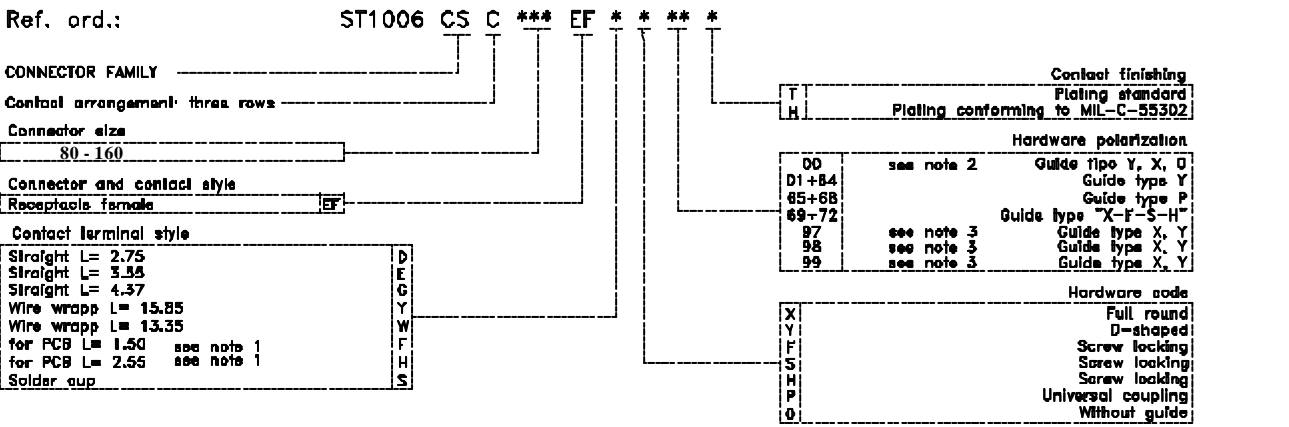
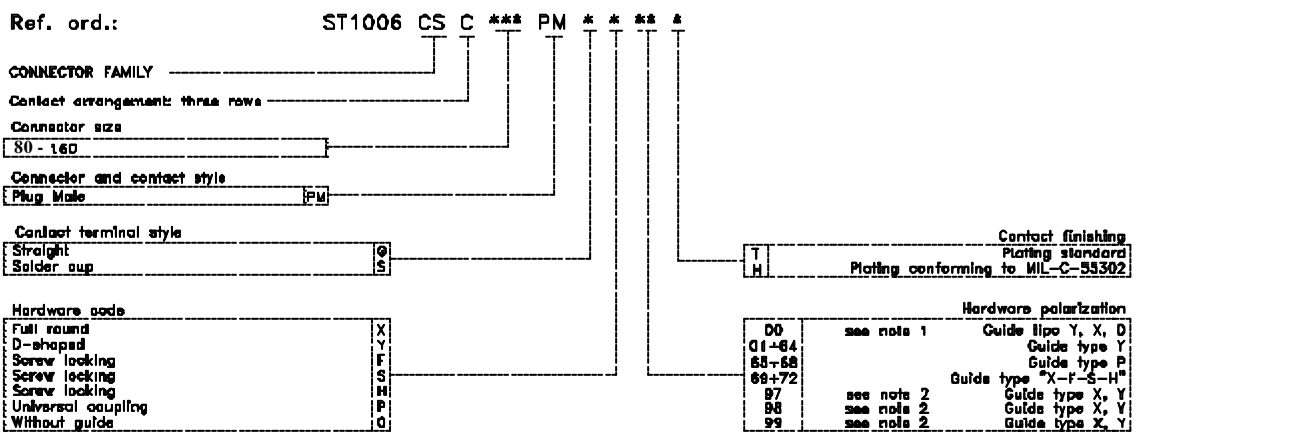
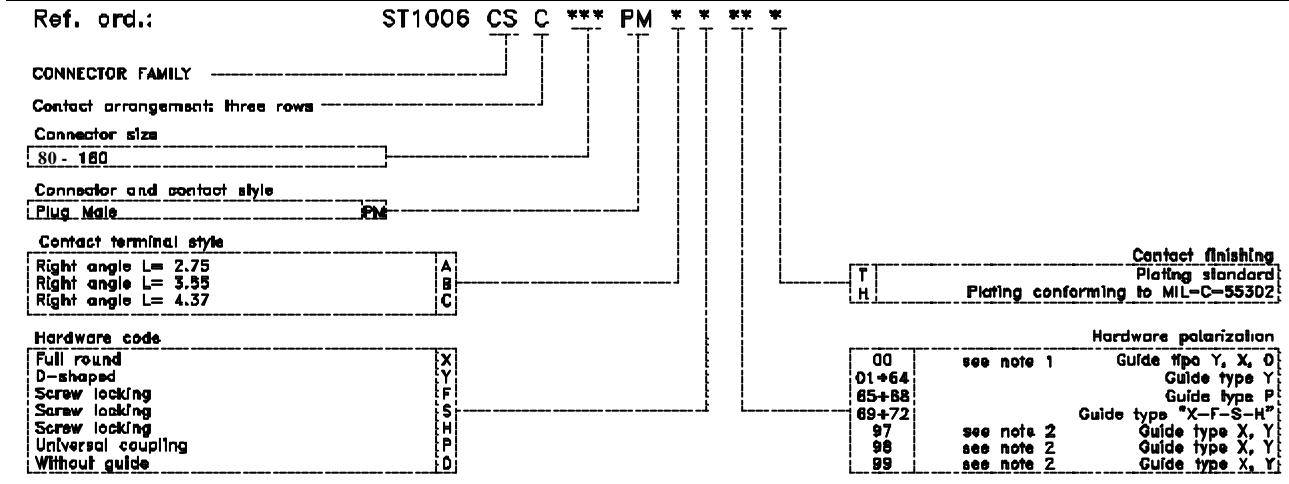
HYPERTAC  
interconnect

CSC

160 - 80

(Continued)

CONTACT POSITIONS



NOTE:

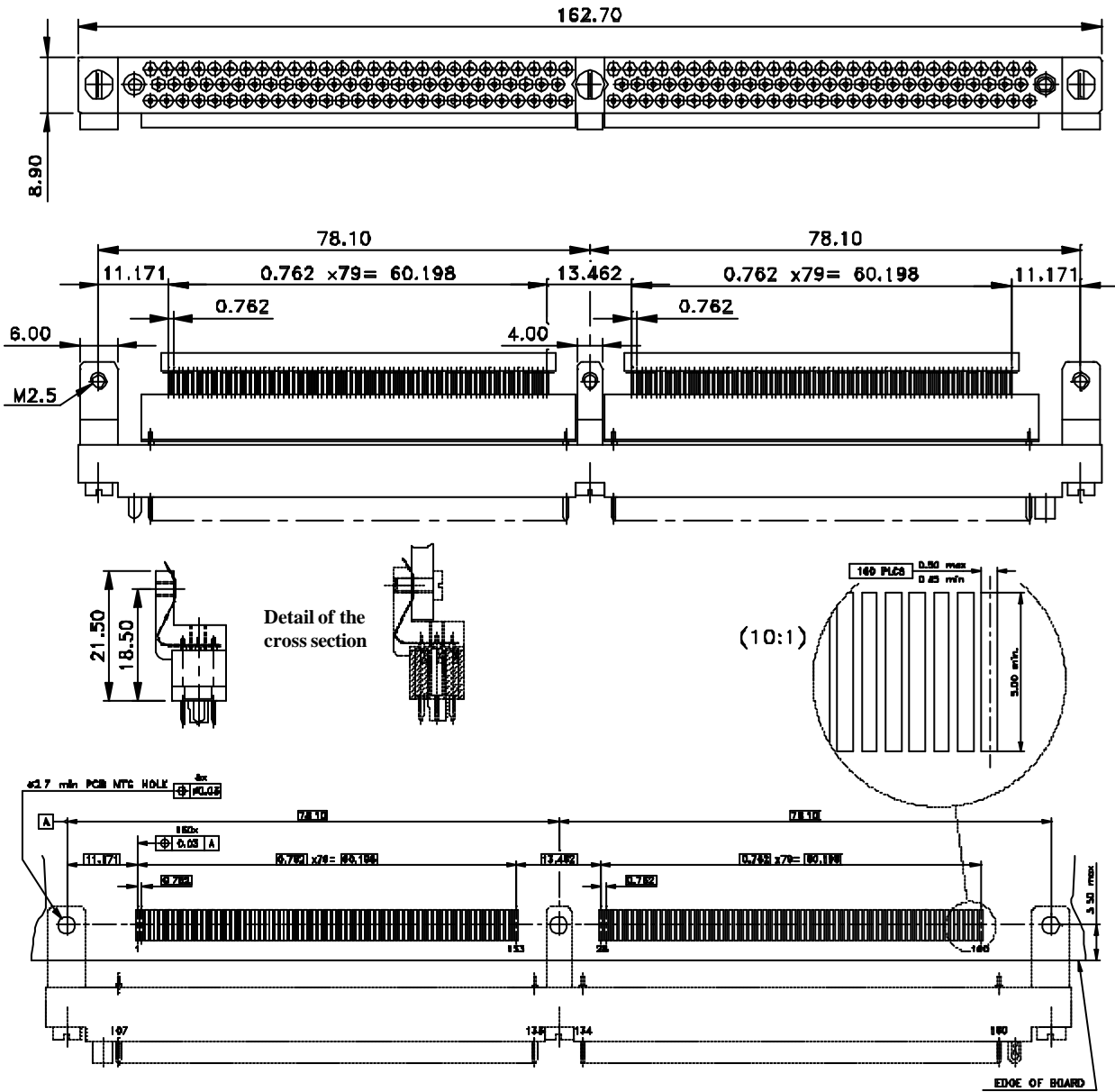
- 1) With ref.:  
Y - Guide type Y in the 01 polarized position without Locille applied  
X - Guide type X in the 69 polarized position without Locille applied  
0 - Connector without guide
- 2) Guide shipped loose:  
97 - two male guide pin  
98 - two female guide socket  
99 - one male guide pin and one female guide socket

HYPERTAC  
interconnect

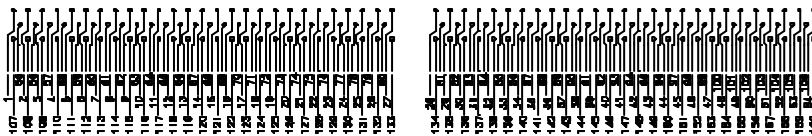
CSC  
SMT

PLUG CONNECTOR :  
160  
PIN CONTACT POSITIONS

Specific Design Ref:  
CSC160PMU\*\*\*/18937



Assignment Diagram - TERMINATION SIDE



Notes :

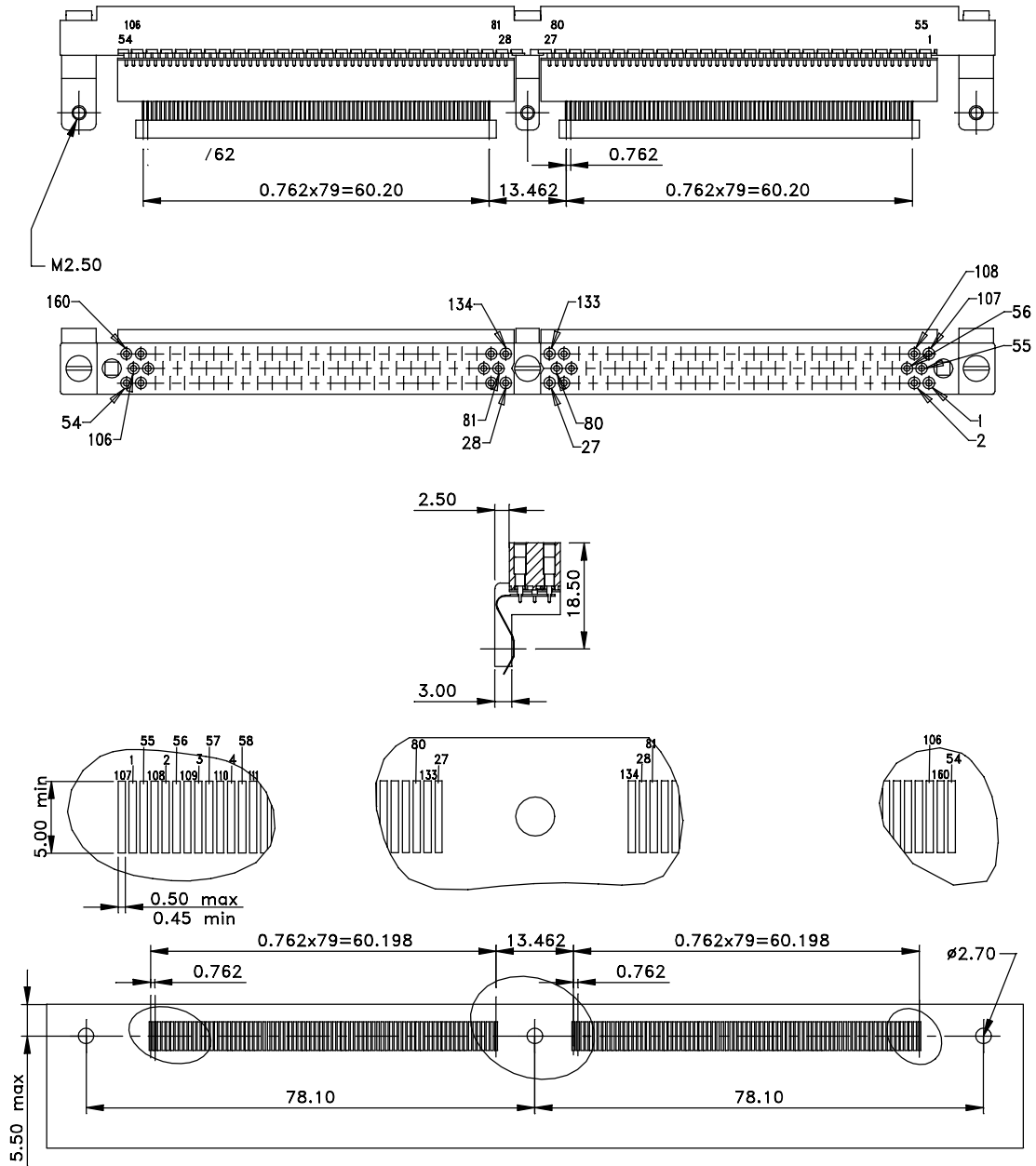
- 1) All Dimensions are in mm
- 2) Plating : Solder pads Sn/Pb per MIL-P-81728 20 ±50 μm

HYPERTAC  
interconnect

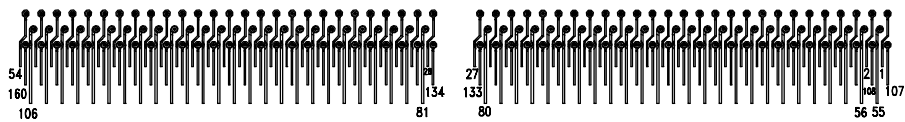
CSC  
SMT

RECEPTACLE CONNECTOR :  
160  
SOCKET CONTACT POSITIONS

Specific Design Ref:  
CSC160EFU\*\*\*\*/21676



Contact assignment (termination side)



Notes :

- 1) All Dimensions are in mm
- 2) Plating : Solder pads Sn/Pb per MIL-P-81728 20  $\pm 50$   $\mu$ m